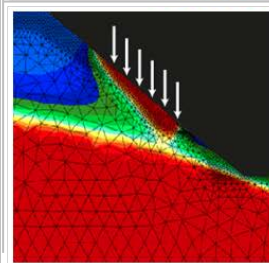
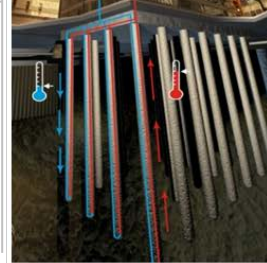
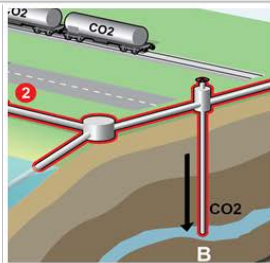


Post-Doc Position in Geomechanics at the EPFL, Lausanne, Switzerland



THE LABORATORY OF SOIL MECHANICS AT THE EPFL

The Laboratory of Soil Mechanics (LMS) is one of the laboratories within the School of Architecture, Civil and Environmental Engineering (ENAC) of the Swiss Federal Institute of Technology, Lausanne (EPFL). The LMS focuses its research activities on the protection from geo-hazards and industrial damage to the environment, landforms and structures. Our experimental and modelling resources are mobilised to understand, describe and predict the environmental impact of the technologies of future days, such as nuclear and chemical waste disposal, petroleum and gas exploitation, transportation and storage, methane hydrate technology, CO2 geological sequestration, and energy technologies related to heat storage. The LMS is directed by Prof. Lyesse Laloui; it has 5 academic staff members, 3 Post-docs, 10 PhD students and 10 employees. More information about the LMS and its current research can be found at <http://lms.epfl.ch/en>.

AVAILABLE POSITION

The LMS is looking for a Post-Doctoral fellow to work on [Geo-mechanical investigations of bio-improved soils](#). The aim of the Post-Doctoral position is to investigate the role of bacteria in modifying and controlling the mechanical behaviour of soils in the framework of Microbially Induced Calcite Precipitation (MICP), as well as identify the main physical mechanisms involved. The research will rely on interdisciplinary experimental investigations and advanced multiphysical modelling.

REQUIREMENTS

A recent PhD degree in soil mechanics is required with an expertise in the field of the project. Suitable candidates have scientific research skills, outstanding communication skills and a teamwork attitude. First candidate selection will be performed on the basis of the excellence of the CV. Selected candidates will then be invited for an interview at the EPFL.

CONDITIONS OF EMPLOYMENT

We are offering excellent facilities and competitive salary (about 70'000.- CHF per year) commensurate with the candidate's records and experience. Personal initiative and independent research tasks related with the candidate's interests will be encouraged. Other activities will include interaction with PhD and Ms students and participation in teaching. The position offers unique research opportunities and international networking. The position has an initial 18-months duration.

APPLICATIONS

The position is open and will start upon agreement. Suitable, highly-motivated candidates should send an electronic application (including a cover letter describing interests and qualifications and a CV, as a single PDF) to recruitment.lms@epfl.ch.